



WORDSWORTH
HOMES INSPIRATIONAL
S P A C E S

TO LET

High Quality Office Suites

Available Immediately

220 Ashley Road, Hale, Altrincham, WA15



Situated in the centre of Hale Village

Offering a combination of high quality office suites situated on the First and Second floor of this beautiful period building

Sizes range from 143 sqft – 921 sqft

flexible rental terms offered from 1 month upwards



Contact Wordsworth Homes on:

07545400097 / 0161 929 9904

220 Ashley Road, Hale, Cheshire, WA15 9SR

220 Ashley Rd, Hale, WA15 9SR

Offering high quality office suites, Inclusive of all outgoing with the exception of telephone/internet charges and business rates. This fabulously positioned property is located in the Centre of Hale and situated opposite Tesco Express. Onsite parking at additional charge (subject to availability and additional charges) and pretty communal garden. Flexible leases available starting from 1 month upwards.

Current accommodation layout:

Ground Floor

Shared lobby.

First Floor

Suite 2

365 sqft. A dual aspect room with feature radiators and fireplace. Category 2 lighting and data cabling.

Fully carpeted.

Rent **£275.00** per week

Suite 3

143 sqft. Category 2 lighting and data cabling.

Radiator. Fully carpeted.

Rent **£99.50** per week

Second Floor

Suite 4

413 sqft. Comprising of 2 separate interconnecting office suites. Standard lighting. Radiator. Fully carpeted.

Rent **£175.00** per week

Kitchenette

Shared

Toilets

Male and female

Services

All Mains services are connected. Heated by shared gas central heating.

Lease

To be let on flexible terms from as little as 1 month. Inclusive of all outgoing with the exception of telephone/internet charges and business rates.

Legal Costs

Each party to the lease are responsible for their own legal costs. License fee payable for short term lets.



Please note: that the above office shots are of the currently tenanted Ground floor and just used as an example.

Contact:

Wordsworth Homes

220 Ashley Road

Hale

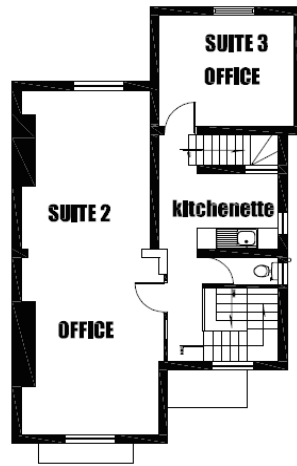
Cheshire

WA15 9SR

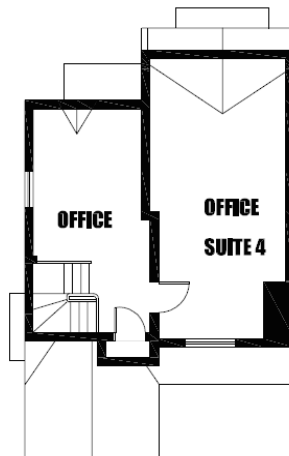
www.wordsworthhomes.co.uk

07545400097 / 0161 929 9904

Floor Plans below are not to scale.
For illustration purposes only.



FIRST FLOOR PLAN



SECOND FLOOR PLAN

Contact

Wordsworth Homes
220, Ashley Road
Hale. WA15 9SR
07545400097 / 0161 929 9904
www.wordsworthhomes.co.uk



WORDSWORTH
HOMES INSPIRATIONAL
S P A C E S